

YSGOL Y GRAIG'S JOURNEY TO PLAN FOR THE CURRICULUM FOR WALES



YSGOL Y GRAIG - 'Y GRAIG SY'N SYLFAEN'.





THE SCHOOL'S BACKGROUND

The school stands on the outskirts of the market town of Llangefni, Anglesey.

The new school building opened in 2009.

The building is purposely designed to meet the needs of pupils in the 21st Century. A school garden, enclosed play area for the Nursery children with a spacious yard and playground earmarked for the rest of the school.

We serve the Flying Start area and strongly believe that we have a duty to provide our children with opportunities and experiences that enable them to learn about their community within our local area, and its subsequent relationship with the wider world.

Inclusion and well-being are important to us at Y Graig. Regardless of a child's background, or needs, we are here to ensure that we offer provision that opens the door to a world that is exciting and full of opportunities.



OUR AIM, ETHOS AND MOTTO

- Create a happy and safe environment and atmosphere where all learners can grow, develop and mature to become a confident individual, who's aware of the well-being of others, and is a responsible member of the society.
- Give all learners the opportunity to develop to their full potential in all aspects of the curriculum.
- The school's motto: '*Y Graig sy'n Sylfaen*'.



SCHOOL VALUES

WELL-BEING
AND CARE

CONFIDENT
AND HAPPY

INCLUSIVE

**Y Graig
sy'n
Sylfaen**

INDEPENDENT

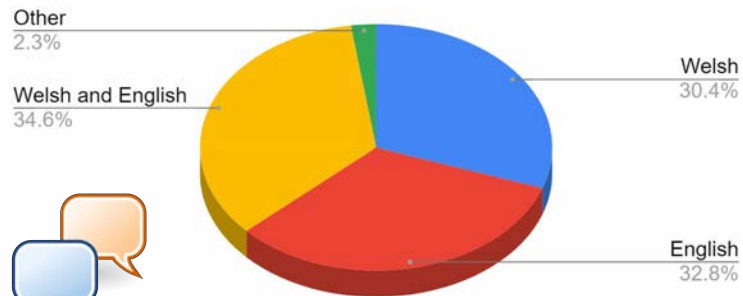
RESPECT

WELSHNESS

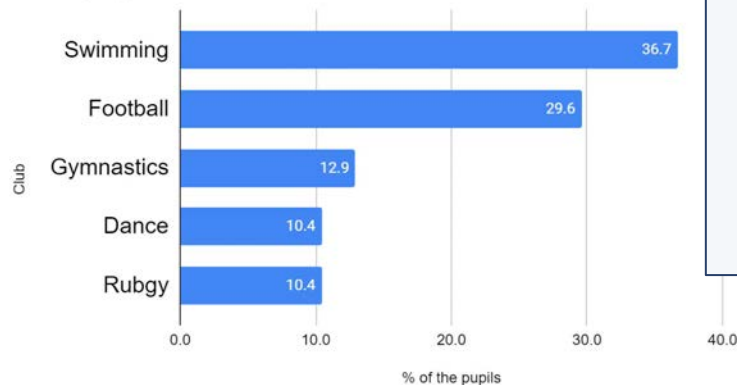


SCHOOL CONTEXT

Language spoken at home



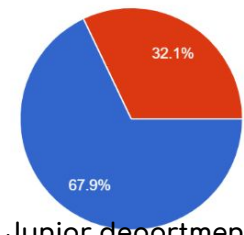
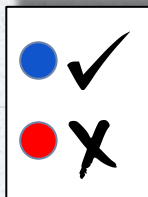
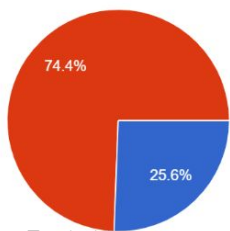
Most popular after school clubs



Other clubs include:

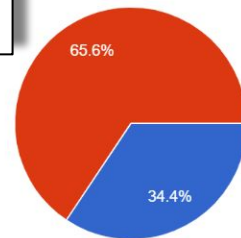
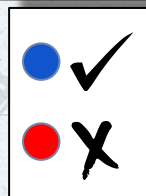
- Basketball
- Tennis
- Drama
- Brownies
- Majorettes
- Horse riding
- Karate
- Kick-boxing

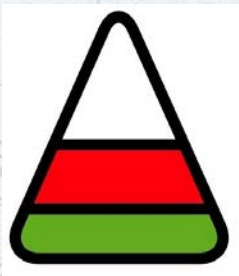
Own a mobile phone



Junior department

Watch Welsh television programs





SCHOOL PARTNERSHIPS

- Parents
- Governors
- School Council
- Eco Council
- Language Charter
- Yr Urdd
- Môn Actif
- Police
- School Nurse
- Barnardos
- Teulu Môn
- Team Around the Family
- Llangefni Schools Catchment area
- Ysgol Gyfun Llangefni
- Llyfrgell Llangefni
- Oriel Ynys Môn
- Archives
- Language Centre
- Sbarduno
- Bangor University
- Coleg Menai
- Plas Arthur Leisure Centre
- Isle of Anglesey County Council
- GwE
- ABC Unit
- Flying Start
- Cyfeillion Agor y Gair



YSGOL Y GRAIG'S PATH TOWARDS THE CURRICULUM

Principles and
purpose for us
at Y Graig

1

The four purposes,
12 Principles

3

Progress
and
Assessments

5

The importance of Y Graig
To all of the school's
stakeholders

2

Pedagogy
Including a
Mindset of
Growth

4

Review and
Appraisal

6



OUR VISION AND VALUES

A word cloud that encompasses what Ysgol y Graig means to all our stakeholders.

9



'Y GRAIG SY'N SYLFAEN' - OUR LEARNER'S VOICE

Learning

Feeling
safe

Play

Speak
Welsh

Work
hard

Be
curteous

Have
fun

Concentrate

Learn
new
skills

Help
others

Friends

Be
kind

Be a
good
friend

Share

These words were highlighted following the sharing of a questionnaire with the pupils.



'Y GRAIG SY'N SYLFAEN' - OUR STAFF'S VOICE

These words were highlighted following the sharing of a questionnaire with staff.

hunan-barch

dyfalbarhau

ymholgar

cymuned

gwerthfawrogol

Cymreictod

agwedd
bositif

llesiant

gonestrwydd

Cynhwysol

annibyniaeth

ymddygiad
gwyb

mentrus

parch

mwynhau
dysgu

hyderus

moesol



'Y GRAIG SY'N SYLFAEN' - OUR PARENTS' VOICE

cwrtais

**yn
ffrind
da**

**mwynhau
dysgu**

**magu
hyder**

**ymddygiad
sy'n
arddangos
parch at eraill**

gonestrwydd

**caredigrwydd
at blant ac at
greaduriaid**

annibyniaeth

dyfalbarhad

hapus

**meddwl
agored,
iach**

creadigrwydd

**cyfathrebu'n
gywir**

**cyfathrebu'n
gywir**

**profiadau
ymarferol e.e.
coginio neu
arddio**

**ymgysylltu
gyda'r
gymuned**

**y gallu i
ddarllen ac
ysgrifennu**

**magu
hyder**

**awyddus i
ddysgu**

**agwedd
positif
tuag at
waith**

These words
were
highlighted
following the
sharing of a
questionnaire
with parents/
guardians.



'Y GRAIG SY'N SYLFAEN' - OUR GOVERNORS' VOICE

yn
iach

hapus

cael
dysgu
sgiliau
bywyd

annibynnol

ymddygiad da

cael
profiadau
eang

yn
mwynhau
dod i'r
ysgol

yn
ymdrechu

llesiant

hwyl

cyfle
cyfartal

bod yn
rhan o
gymuned
Y Graig

llwyddiannus

yn rhugl
ddwyieithog

cymreictod

These words
were
highlighted
following the
sharing of a
questionnaire
with the
Governors.





'Y GRAIG SY'N SYLFAEN' - MANDATED ELEMENTS TO THE CURRICULUM

RELIGION, VALUES AND ETHICS

RELATIONSHIPS AND SEXUALITY EDUCATION

WELSH

ENGLISH

Religion, Values and Ethics is a mandatory area within the Curriculum for Wales. One of the main aspects of this area is religion and non-religious philosophical conviction. The school will aim to develop learners into healthy, confident individuals with secure values and who establish their spiritual and principled beliefs. The school will ensure activities that will develop learners spiritually, morally, socially and culturally.

This area is statutory in Wales. Parents/guardians do not have the right to exclude their child(ren) from this education. At Ysgol y Graig we will ensure that the field is taught within context and is fit and appropriate to the age of the pupils. Learners learn about feelings, healthy relationships and how they think about themselves.

Welsh is the main medium of the school. Through their time in the Foundation Phase learners are immersed in the Welsh language by singing nursery rhymes, enriching the spoken language through phrases and work using Pie Corbett's oral method. By the top of the school learners will be fully bilingual. Latecomers may attend the island's language centre. The school has adopted and is implementing the Anglesey Language Charter guidelines.

At Ysgol y Graig we believe it is important to ensure opportunities for learners to develop into bilingual citizens who can communicate confidently in both Welsh and English. We therefore formally introduce English to learners when they're 7 years old. We will do this by using English as the language medium of the class within specific lessons.



'Y GRAIG SY'N SYLFAEN' - THE 4 PURPOSES

Ambitious, capable learners

- I can concentrate, try my best and set myself challenges.
- I can use my knowledge and skills in different ways.
- I can ask questions and solve problems.
- I can communicate and explain my ideas.
- I am continually able to improve my work.
- I can understand data and use my mathematical skills.
- I get satisfaction from learning and **I'm ready to learn throughout my life.**

Enterprising, creative contributors

- I can use my knowledge and skills to create new objects.
- I can persevere and think of different ways of solving problems.
- I am curious and can use information to help me take risks.
- I can work well as a member of a team.
- I can show my ideas and feeling in a variety of ways.
- I am ready to play my full part in my **life and work.**





'Y GRAIG SY'N SYLFAEN' - THE 4 PURPOSES

Ambitious, capable learners

- I can develop in confidence and tenacity.
- I understand how to treat others and their feelings.
- I understand how to stay healthy whilst enjoying a balanced diet and taking part in regular exercise.
- I take part in physical activities.
- I can find out information to keep myself safe.
- I am ready to live life and realise **my aspirations as a valued member of society.**

Enterprising, creative contributors

- I can use information to help me form opinions.
- I understand that I have rights and responsibilities.
- I understand that what I do can have an impact on others.
- I can show that I have knowledge of the world around me in the present and past.
- I am ready to be a citizen of **Wales and the world.**



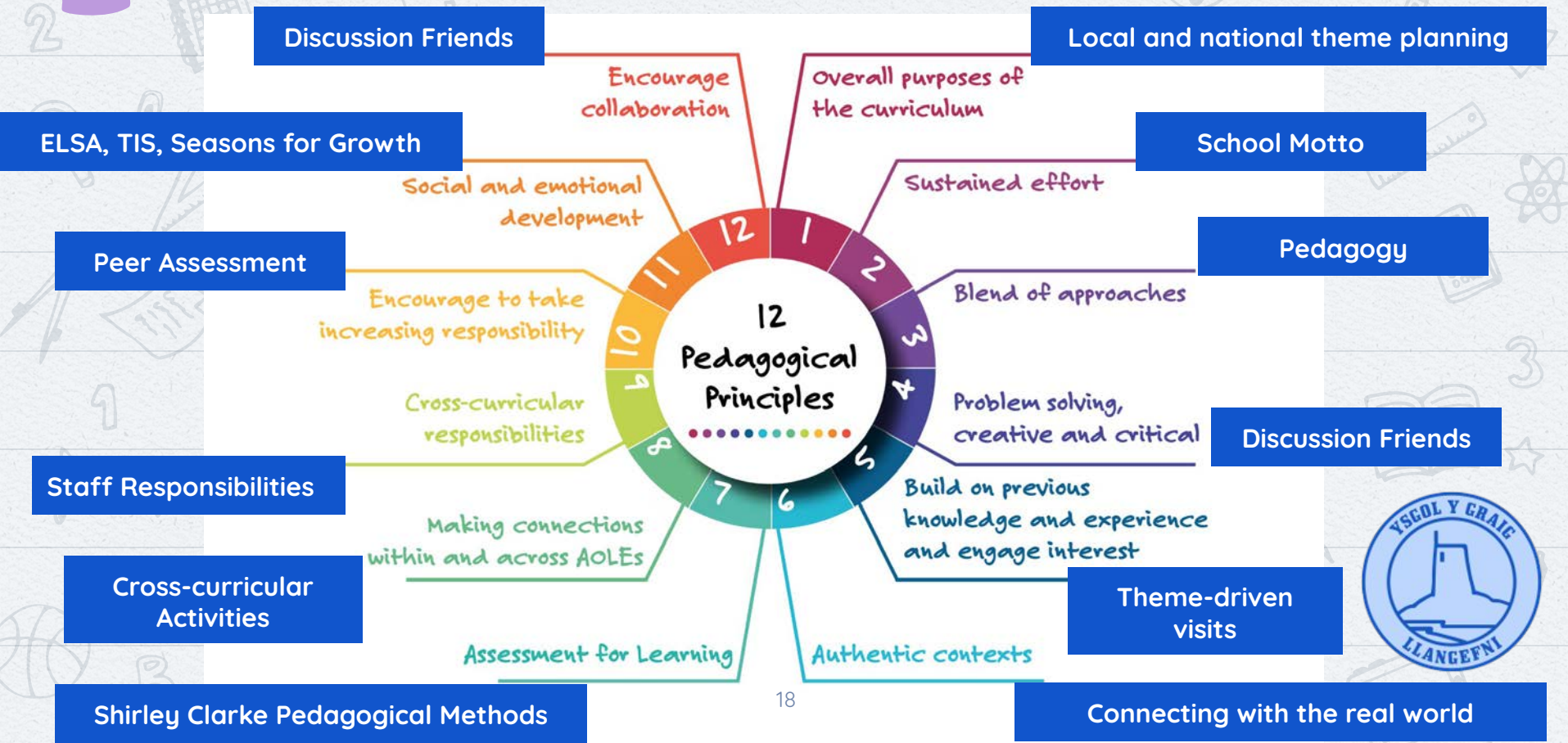


'Y GRAIG SY'N SYLFAEN' - THE 12 PRINCIPLES

<p>focus constantly</p> <p><input type="checkbox"/></p>	<p>gives the learners a challenge</p> <p><input type="checkbox"/></p>	<p>use a mix of methods</p> <p><input type="checkbox"/></p>	<p>use a mix of methods including those that promote problem solving skills, creative skills and the ability to think in a critical manner</p> <p><input type="checkbox"/></p>
<p>setting tasks and choosing resources that build on previous knowledge and experience and generate interest</p> <p><input type="checkbox"/></p>	<p>create authentic contexts for learning</p> <p><input type="checkbox"/></p>	<p>follow the principles of assessment for learning</p> <p><input type="checkbox"/></p>	<p>extend within and across the Learning and Experience Areas</p> <p><input type="checkbox"/></p>
<p>constantly strengthening Cross Curricular responsibilities, and opportunities are provided to exercise them</p> <p><input type="checkbox"/></p>	<p>motivate children and young people to take increasing responsibility for their own learning</p> <p><input type="checkbox"/></p>	<p>promoting social and emotional development and positive relationships</p> <p><input type="checkbox"/></p>	<p>promote collaboration</p> <p><input type="checkbox"/></p>



'Y GRAIG SY'N SYLFAEN' - THE 12 PRINCIPLES



'Y GRAIG SY'N SYLFAEN' - THE 12 PRINCIPLES

At the root of the curriculum is pedagogy. As we plan for the curriculum, we will consider the most effective pedagogical methods for supporting learners to support the four purposes.

As a school we follow Shirley Clarke' principles for assessment for learning, which stimulates reflection on their own work and that of their peers. We provide opportunities to practise and reinforce cross-curricular skills of literacy, numeracy and digital learning.

Through sound pedagogy at Ysgol y Graig, we will develop a positive approach to learning, strong metacognitive skills, problem-solving skills and the development of the communication skills in a number of ways. In all activities provided, we take account of the needs of all our learners. There will be opportunities for indoor learning in the classroom and outdoors.



'Y GRAIG SY'N SYLFAEN' - THE CURRICULUM

WHY?

Develop our learners to

- Concentrate
- Strive
- Improve
- Work together
- Think
- Imaginative
- Persevere

will allow them to be happy, healthy and experience success in life.

WHAT?

Prepare activities based on The 6 Areas of Learning, combining the cross-curricular skills (literacy, Number and Digital).



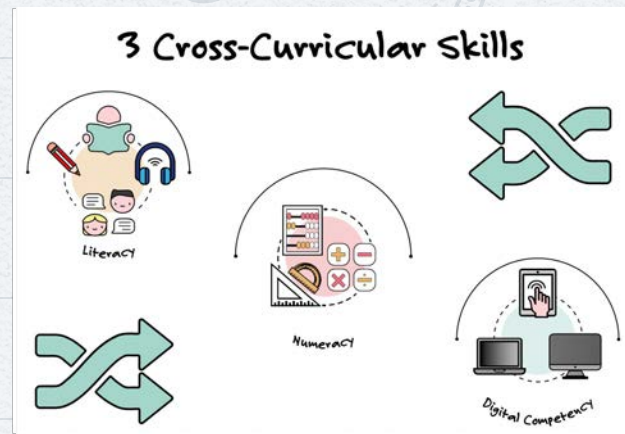
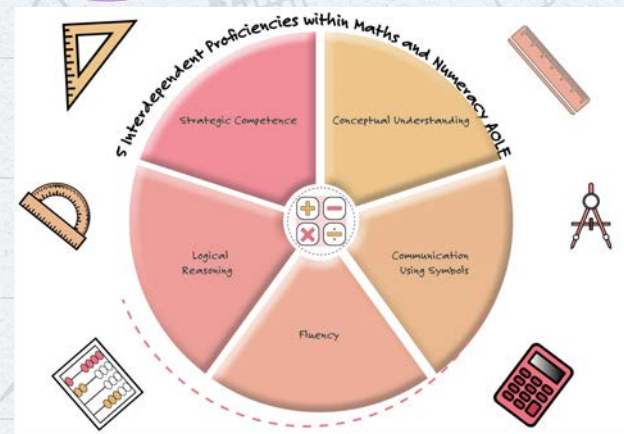
HOW?

Activities that challenge our learners to ensure a sustained effort to meet but are within the reach of high expectations.

Promote different skills in the classroom including problem solving, creativity, and developing them into critically minded learners.

Follow Shirley Clarke's pedagogical principles.

'Y GRAIG SY'N SYLFAEN' - THE CURRICULUM



Statements of What Matters

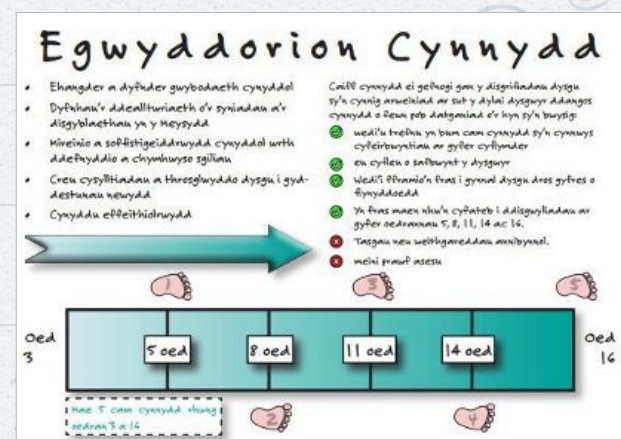
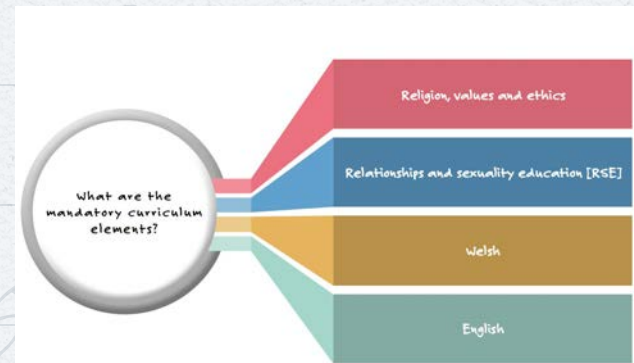
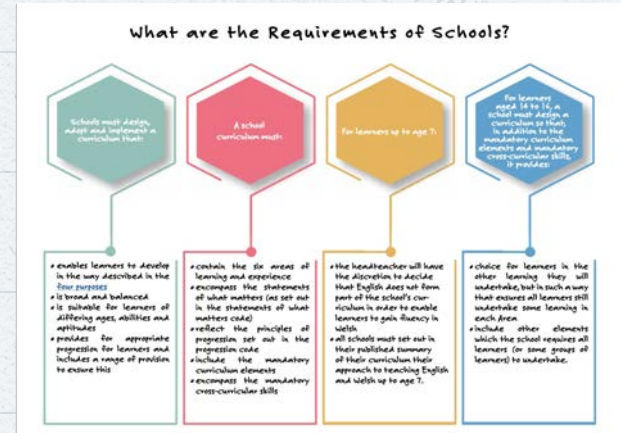
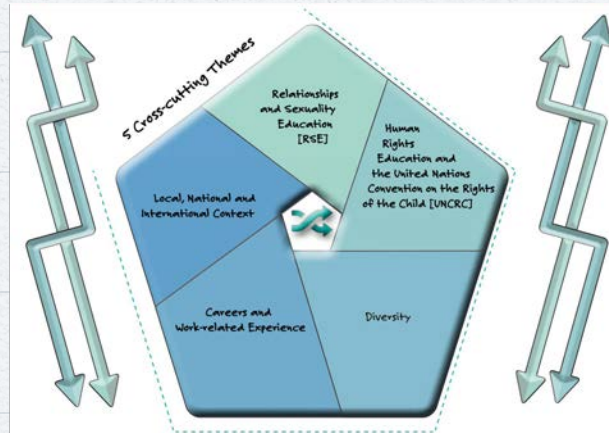
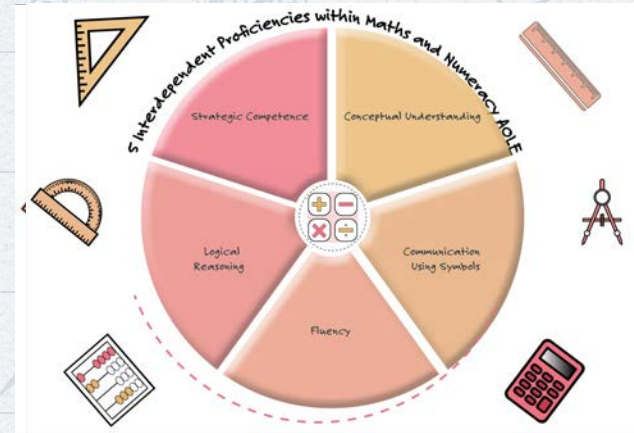
- 27 Statements of What Matters
- Ensure a level of consistency in curriculum design across settings and schools

All the elements set out in the statements of what matters code must be covered in each school and funded non-maintained settings' curriculum.

A school's curriculum must cover all of the statements of what matters from age 3 to 16, providing engagement with their key concepts in a developmentally appropriate way.




'Y GRAIG SY'N SYLFAEN' - THE CURRICULUM



'Y GRAIG SY'N SYLFAEN' - THE CURRICULUM







CROSS-CURRICULAR THEMES

Relationship education, and sexuality - Relationships and sexuality, learning about things like feelings, healthy relationships and how we think about ourselves	Human Rights	Amrywiaeth - Respecting people's differences, like their beliefs or where they come from	Careers and experiences related to the world of work - Learning about work and how to choose the kind of work you want to do..	Local, national and international contexts - Learning about Wales, your local area and the world.
---	---------------------	---	---	--

CROSS-CURRICULAR SKILLS

Literacy - listening, speaking, reading and writing in Welsh and in English	Numeracy - using numbers in everyday life.	Digital skills
--	---	-----------------------

6 AREAS OF LEARNING AND EXPERIENCE

LANGUAGES, LITERACY AND COMMUNICATION Learning and understanding different languages. Creating your own stories, poems or films. 	MATHEMATICS AND NUMERACY Understanding and using numbers. Understanding and using symbols. Learning about shapes and measurement. How to collect and use information to make decisions. 	SCIENCE AND TECHNOLOGY Understanding nature and living things. Learning about designing and building things. And how technology works and how to use it to solve problems. 	HUMANITIES Finding out about history, geography, and religions. And also business and politics - how the country is run. And society - how people in our country live together. 	HEALTH AND WEL-BEING Learning about having a healthy body, and a healthy mind. Understanding healthy relationships and how to make good life decisions. 	EXPRESSIVE ARTS Art, Dance, Film, Drama, Music and Digital Media - using technology like computers to make art. 
--	---	--	---	---	---

THE FOUR PURPOSES

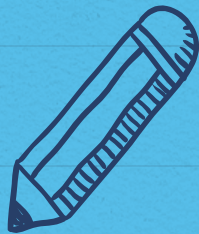
Ambitious, capable learners ready to learn throughout their lives	Enterprising, creative contributors, ready to play a full part in life and work	Ethical, informed citizens of Wales and the world.	Healthy, confident individuals, ready to lead fulfilling lives as valued members of society.
---	---	--	--



'Y GRAIG SY'N SYLFAEN' - WHAT MATTERS STATEMENTS

STATEMENT OF WHAT'S IMPORTANT					
Expressive Arts	Health and Well-being	Humanities	Mathematics and Numeracy	Languages, Literacy & Communication	Science and Technology
Exploring the expressive arts is essential to developing artistic skills and knowledge and it enables learners to become curious and creative individual	Developing physical health and well-being has lifelong benefits.	Enquiry, exploration and investigation inspire curiosity about the world, its past, present and future.	The number system is used to represent and compare relationships between numbers and quantities.	Languages connect us.	Being curious and searching for answers is essential to understanding and predicting phenomena..
Responding and reflecting, both as artist and audience, is a fundamental part of learning in the expressive arts.	How we process and respond to our experiences affects our mental health and emotional well-being.	Events and human experiences are complex, and are perceived, interpreted and represented in different ways.	Algebra uses symbol systems to express the structure of mathematical relationships..	Understanding languages is key to understanding the world around us.	Design thinking and engineering offer technical and creative ways to meet society's needs and wants.
Creating combines skills and knowledge, drawing on the senses, inspiration and imagination.	Our decision-making impacts on the quality of our lives and the lives of others	Our natural world is diverse and dynamic, influenced by processes and human actions.	Geometry focuses on relationships involving shape, space and position, and measurement focuses on quantifying phenomena in the physical world	Expressing ourselves through languages is key to communication.	The world around us is full of living things which depend on each other for survival.
	How we engage with social influences shapes who we are and affects our health and well-being.	Human societies are complex and diverse, and shaped by human actions and beliefs.	Statistics represent data, probability models chance, and both support informed inferences and decisions..	Literature fires imagination and inspires creativity.	Matter and the way it behaves defines our universe and shapes our lives
	Healthy relationships are fundamental to our well-being.	Informed, self-aware citizens engage with the challenges and opportunities that face humanity, and are able to take considered and ethical action.			Forces and energy provide a foundation for understanding our universe.
					Computation is the foundation for our digital world.





OUR THEMES AND PLANNING METHODS



'Y GRAIG SY'N SYLFAEN' - PLANNING

THEME

The Nursery and up to Year 1 plan themes seasonally.

Year 2 to Year 6 plan themes by a term and a half.



All classes then plan themes within the 'main theme'

LEARNER'S VOICE

We put the learner's voice at the heart of our planning. They will have the opportunity to share what they already know and to formulate questions for further learning. We also give our parents the opportunity to contribute to the content of our theme.



We use a variety of methods to record and collate ideas.

PLANNING

Our activities are planned thematically based on the 6 Areas of Learning. We ensure that learners have the opportunity to practise the 3 cross-curricular skills during the activities.



ASSESSMENT

Learners are given the opportunity to assess work themselves on the basis of the Success Criteria set at the beginning of a task.



There are opportunities for our learners to assess the work of their peers.



Internal assessments are conducted in September and then in April in Reading and Mathematics.



Y GRAIG SY'N SYLFAEN - THEMES

Nursery and Reception classes

FI FY HUN / COCH

Y GAEAF /
YR ARTIG

GRYFFALO /
Y GOEDWIG

SYPREIS
HANDA

FI FY HUN /
HUD A
LLEDRITH

ARCHARWYR /
POBL SY'N
HELPU

Years 1 and 2

Y FFERM

DEINASORIAID

Y MÔR

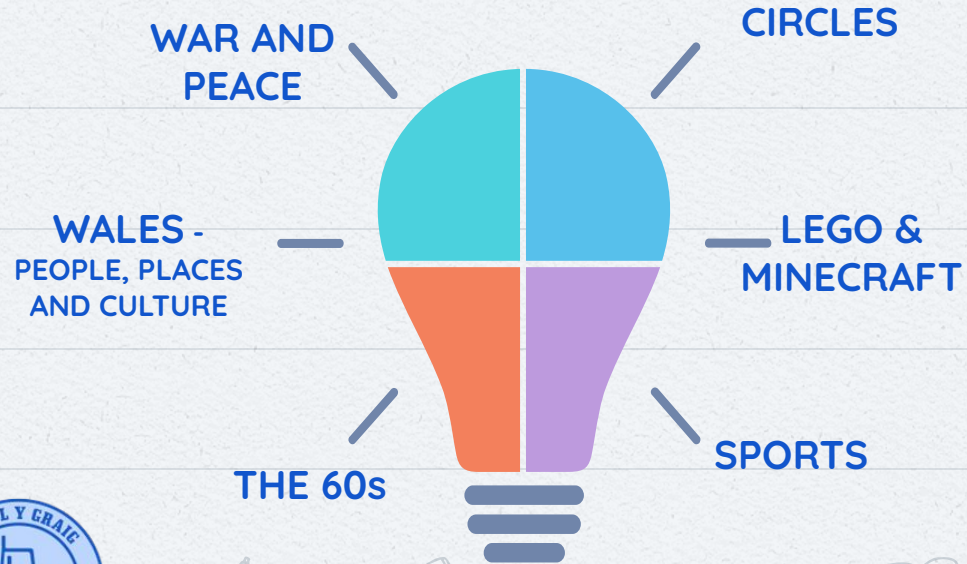
ARCHWILWYR
Y
GYMUNED

Y GOFOD



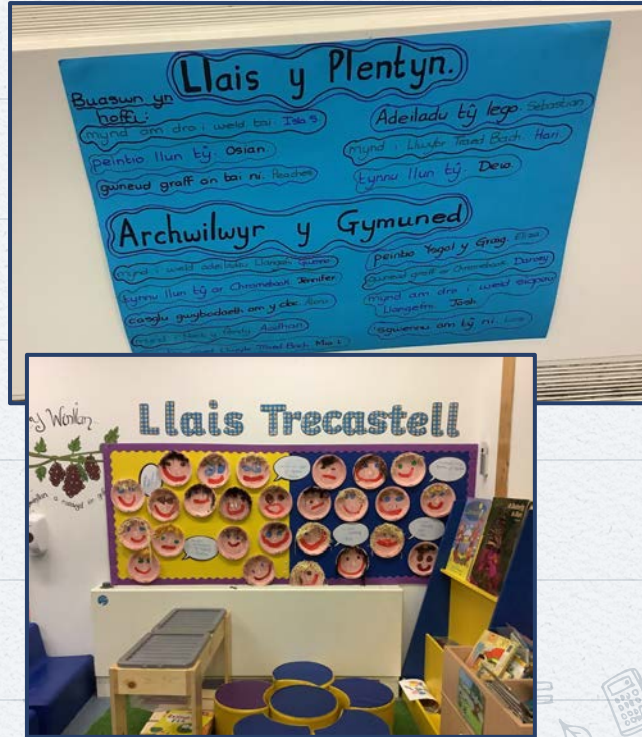
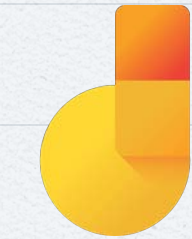
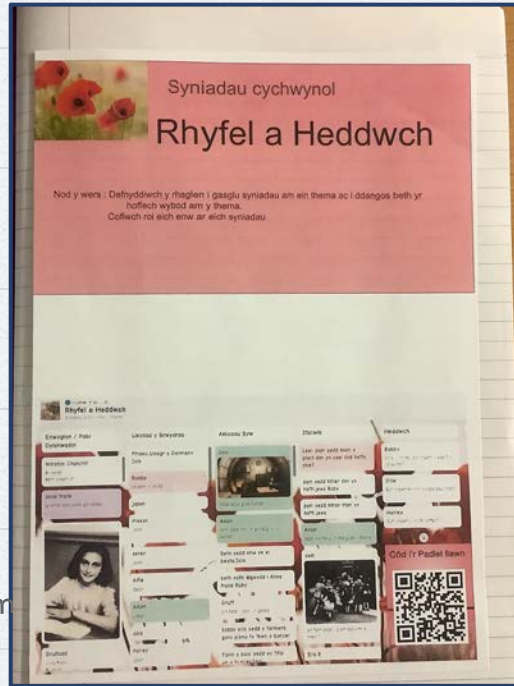


Years 5 and 6 Classes



'Y GRAIG SY'N SYLFAEN' - THE VOICE OF OUR LEARNERS

Our different methods for ensuring that the voice of our learners is a core part of the planning.



'Y GRAIG SY'N SYLFAEN' - SCHEMES OF WORK

MAPIO IAITH



MAPIO RHIFEDD:-
RHIF, MESUR, DATA, RHESYMU



THEMA:
PELL AC AGOS



Sgil	Sgil Rhifedd	Disgrifiadau dysgu (Camau Cynnydd)	MDaPh	Gweithgaredd
<ul style="list-style-type: none"> darllen testunau gwybodaeth yn annibynnol a chan ganolbwyntio dod o hyn i wybodaeth deall syniadau / gwybodaeth cynnwys manylion, gwybodaeth yn eu gwaith 	<ul style="list-style-type: none"> trosglwyddo sgiliau mathemategol i gyd destun bob dydd defnyddio ffeithiau rhif cyfrif yn y pen 		Celfyddydau Mynegiannol / Cerdd	<ul style="list-style-type: none"> dysgu rhythmau Affricanaidd cyfiri gwerth y curiadau Perfformio rhythmau
	<ul style="list-style-type: none"> casglu a chofnodi data echdynnu, cyflwyno a dadansoddi data 	Rwy'n dechrau cofnodi a chyflwyno data mewn amrywiof flyrdd, gan gynnwys defnyddio siartiau rhifo, tablau amlder, a graffiau bloc lle y darperir echelinau a graddfeydd priodol. CC1: Rwy'n dechrau cyflwyno a dehongli data, gan ddefnyddio amrywiaeth o ddulliau. CC2: Rwy'n dechrau dehongli a dadansoddi graffiau, siartiau a data syml.	Dyniaethau / Daearyddiaeth	<ul style="list-style-type: none"> casglu glawiad am fis. Cofnodi a chymharu glawiad dyddiol gyda coedwig law benodol llunio tabl a rhicbren echdynnu ac egluro gwybodaeth
<ul style="list-style-type: none"> darllen testunau gwybodaeth yn annibynnol a chan ganolbwyntio dod o hyn i wybodaeth deall syniadau / gwybodaeth cynnwys manylion, gwybodaeth yn eu gwaith 	<ul style="list-style-type: none"> trosglwyddo sgiliau mathemategol i gyd destun bob dydd casglu a chofnodi data echdynnu, cyflwyno a dadansoddi data 	Rwy'n dechrau cofnodi a chyflwyno data mewn amrywiof flyrdd, gan gynnwys defnyddio siartiau rhifo, tablau amlder, a graffiau bloc lle y darperir echelinau a graddfeydd priodol. CC1: Rwy'n dechrau cyflwyno a dehongli data, gan ddefnyddio amrywiaeth o ddulliau. CC2: Rwy'n dechrau dehongli a dadansoddi graffiau, siartiau a data syml.	Dyniaethau / Daearyddiaeth	<ul style="list-style-type: none"> edrych ar ffurthau sydd ar werth yn ASDA - cofnodi enwau'r ffurthau cyfrifo pellter taith y ffurth o'i wlad dyfiant i gyrraedd Llangefni defnyddio J2E i greu graff echdynnu, dadansoddi a chyflwyno'r data
<ul style="list-style-type: none"> trefnu gwaith yn ôl ffurf a math o ysgrifennu defnyddio iaith briodol defnyddio geirfa 				
<ul style="list-style-type: none"> trefnu gwaith yn ôl ffurf a math o ysgrifennu defnyddio iaith briodol defnyddio geirfa 	<ul style="list-style-type: none"> trosglwyddo sgiliau mathemategol i gyd destun bob dydd casglu a chofnodi data nodi darlenniadau thermomedrau 	CC1: Rwy'n gallu ymchwilio, casglu a chofnodi data sydd yn fy amgylchedd. CC2: Rwy'n gallu casglu a threfnu data er mwyn gofyn ac ateb cwestiynau mewn sefyllfaoedd perthnasol.	Dyniaethau / Daearyddiaeth	<ul style="list-style-type: none"> cymharu tymheredd Coedwig Law a thymheredd Llangefni Cyfrifo gwahaniaeth rhwng y tymheredd
	<ul style="list-style-type: none"> casglu a chofnodi data cyflwyno a dadansoddi data (dewis doeth) - rhestr, tabl, diagram venn 		Dyniaethau / Hanes	<ul style="list-style-type: none"> Cwestiwn: Pa ffyrdd sydd gennym o gyfathrebu? (cymharu dulliau cyfathrebu ddoe (dros 100 mlynedd) a heddiw)





YEARLY ASSESSMENT

On Entry Assessment

for Nursery children

Progress Report for parents

Incerts - Taith 360

All muscles have their own symbol, and are referred to during lessons and as learners self-assess their tasks.



'Y GRAIG SY'N SYLFAEN' - GROWTH MINDSET

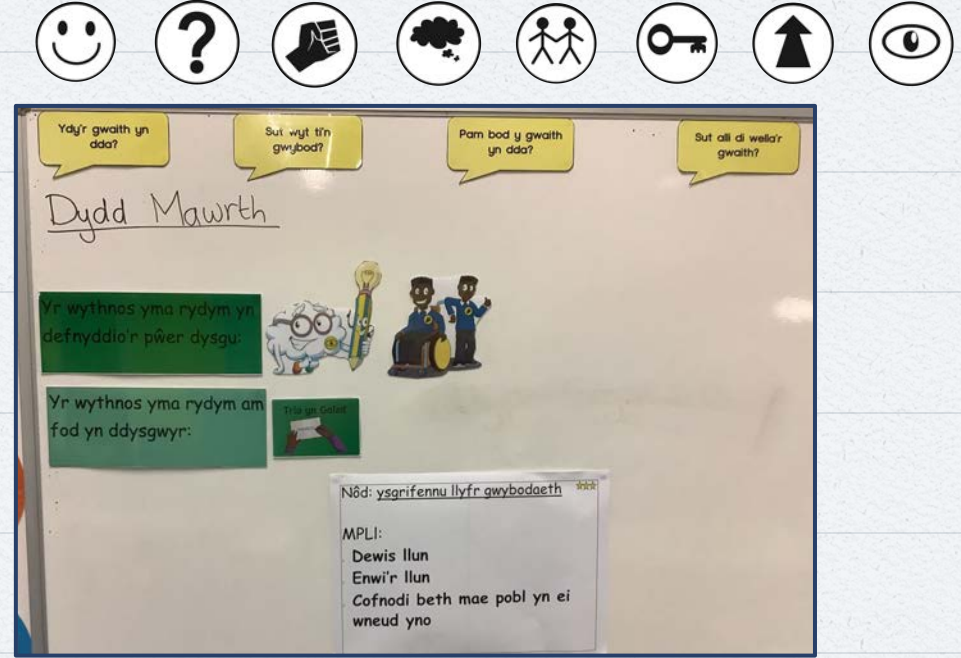


The school has worked on establishing an ethos of mindset towards green thinking. Each class has installed a Mindset wall which reminds learners how to maintain a green mind by using the learning muscles.



'Y GRAIG SY'N SYLFAEN' - THE LEARNING MUSCLES

Learning muscles are visible in class and known to learners as they complete a task.



Y GRAIG SY'N SYLFAEN' - THE LEARNING MUSCLES

Here are examples of the school's methods of the learners self-assessing and reflecting on the muscles used in completing the task.



Rydyn ni wedi bod yn edrych ar y deg gorchymyn
Meini Prawf Llwyddiant:
 Ysgrifennwch 10 rheol ydych chi'n credu byddai'n gwneud y Byd yn le gwell
 Gweithiwch yn annibynnol
 Defnyddiwch y banc geiriau am gymorth i sillafu
 Pa bŵer dysgu ydych chi am ei ddefnyddio ar gyfer y dasg hon?

☆☆☆

☒ ☒ ☒

😊 ? 🖐️ 🧠 👤 🔑 ⬆️ 👁️

Hunan Asesu

Dyma sut rwy'n teimlo am fy ngwaith.

😊 😐 😞

Pa bwerau dysgu ydych chi wedi eu defnyddio heddiw?

😊 ? 🖐️ 🧠 👤 🔑 ⬆️ 👁️

Llythyr Arnie

Fi yn asesu fy llythyr

Ydych chi wedi disgrifio pam fod hi'n braf yn tŷ Nain a Daid? 😊 😐 😞	Ydych chi wedi disgrifio yr hyn welsoch chi yn y dref? 😊 😐 😞	Wnaethoch chi gofio rhoi neges glên i gloir llythyr? 😊 😐 😞
--	---	---

Fy ffrind yn asesu fy llythyr

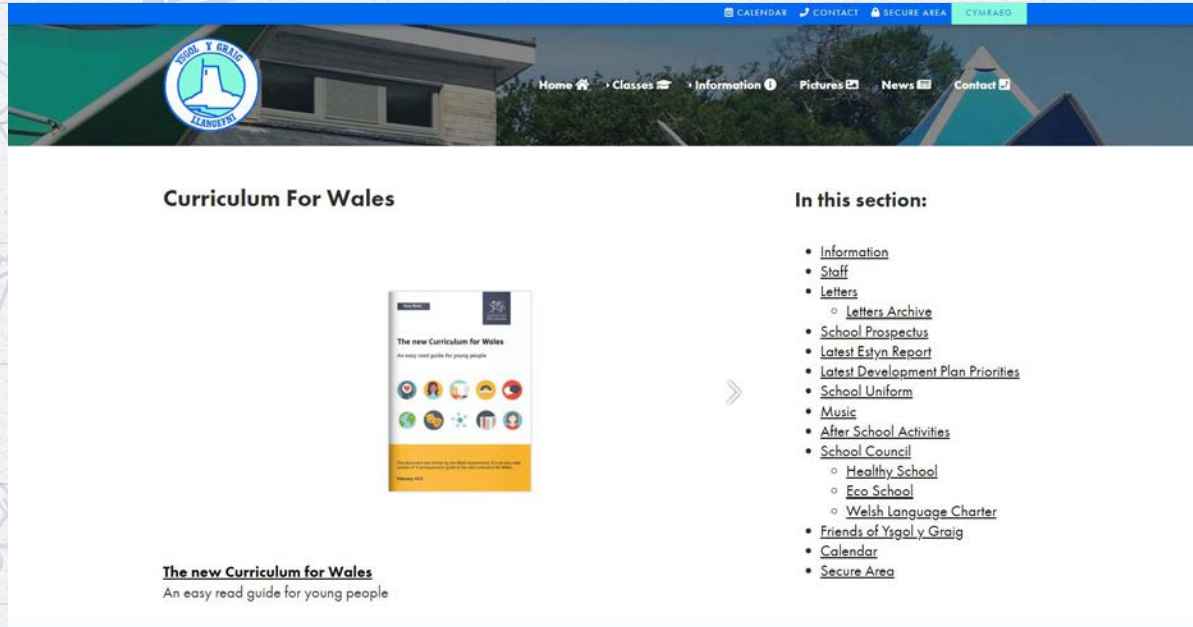
Ydy eich ffrind wedi disgrifio yr hyn mae wedi bod yn ei wneud yn tŷ ei Nain a Daid? 😊 😐 😞	Ydych chi wedi darllen disgrifiadau o'r dref ers talwm? 😊 😐 😞	Oes yna neges gan Mam? Oes yna neges glên gan Archie? 😊 😐 😞
---	--	--

Pa gyhyrau dysgu ydych chi wedi eu defnyddio heddiw?

🔑 🧠 👤 ⬆️ 🖐️ 👁️ ? 😊



'Y GRAIG SY'N SYLFAEN' - THE SCHOOL'S WEBSITE



More information regarding the Curriculum for Wales can be found on the school's website.

